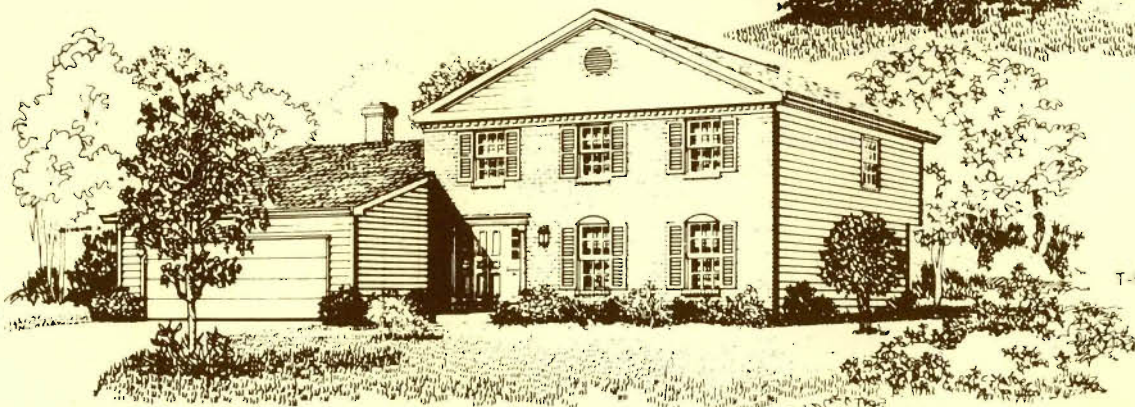


The spaciousness and thoughtful planning of this home offers all kinds of opportunities for entertaining. Enter the large foyer, past the stairway to a formal living room. In the other direction, enter the home's most outstanding plus—a long living expanse where spaces flow from one to the next. From the big family room with fireplace and wet bar; to the sunny breakfast room and U-shaped kitchen with its garden/greenhouse window; to the formal dining room that opens to the living room. There's a handy laundry center concealed behind folding doors, and a powder room off the foyer. Upstairs, the master bedroom with his and her closets and a private bath with its own linen closet; plus 3 more bedrooms, another full bath and linen closet. This home includes a full basement, double garage, a heat pump/air conditioning system, wall to wall carpeting, storm windows and insulation package (R30 ceilings, R13 walls).

T-4



T-5

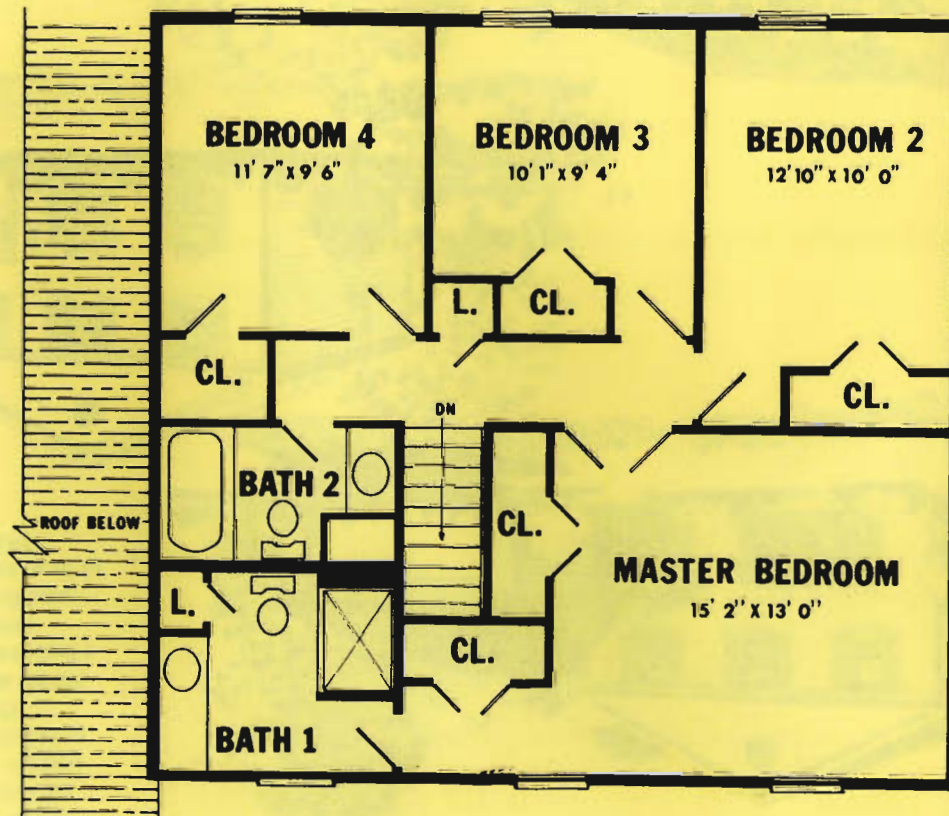


T-6



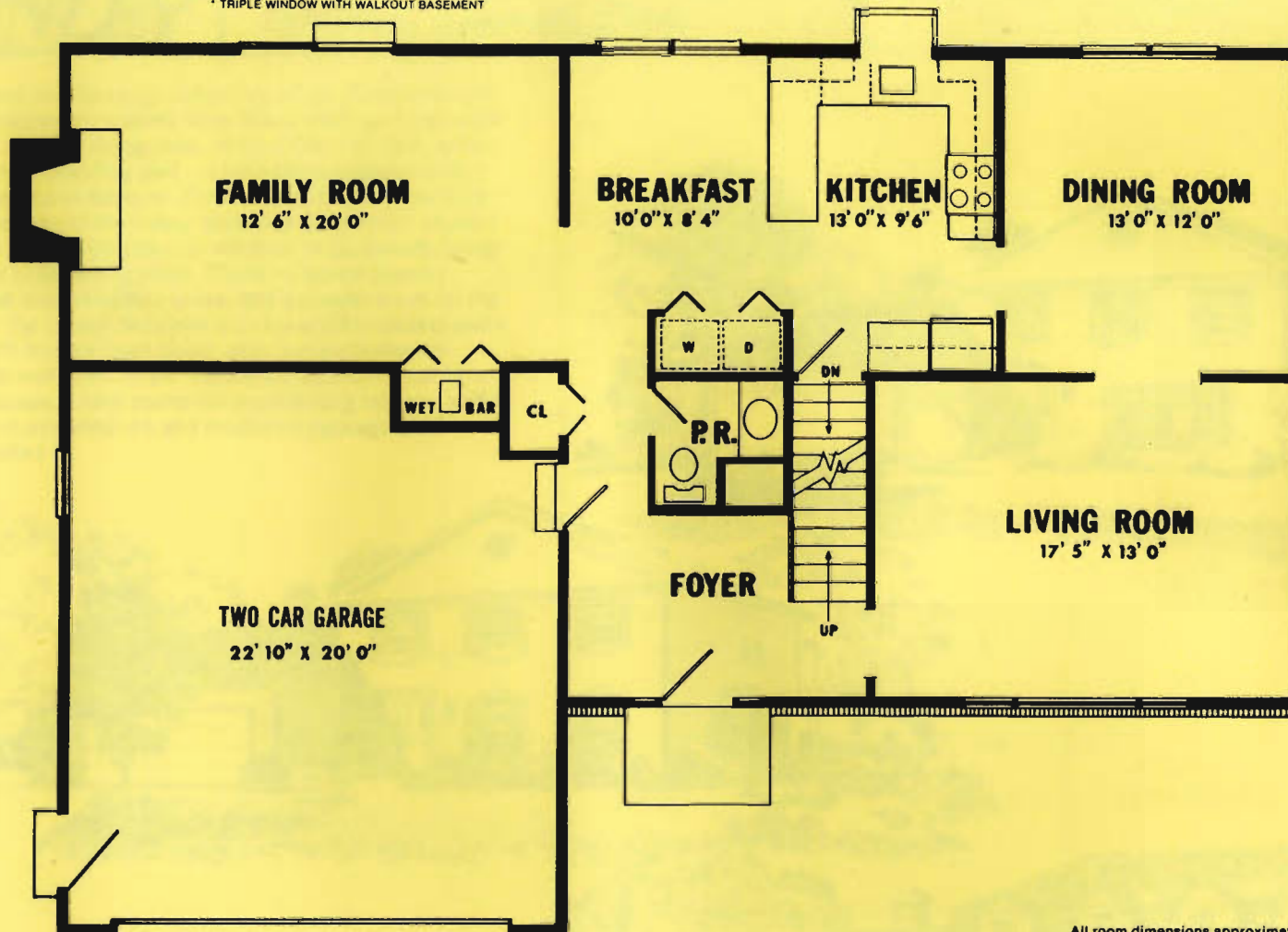
As a result of our continuing research and development, plans and elevations are subject to change.

TOWNLEY FLOOR PLAN



* TRIPLE WINDOW WITH WALKOUT BASEMENT

GARDEN WINDOW



All room dimensions approximate