

MADISON | A Step-Down Colonial Home

From a charming covered porch, you enter a multi-level arrangement of living spaces that's pure 20th century. Step down from the foyer to a 21-foot living room, away from the bustle of the rest of the house. On the other side of the foyer, a formal dining room. From there, to the 20-foot ranch kitchen with a big breakfast area and garden/greenhouse window. Then, step down again to the huge family room with its cozy fireplace and a wet bar. There's a first floor powder room and big daylight utility center. On the upper level, a full bath and 4 large bedrooms, including the private master suite with its own bath, vanity dressing area and walk-in closet. This home includes a full basement, double garage, heat pump/air conditioning system, wall to wall carpeting, storm windows and insulation package (R30 ceilings, R13 walls).

MA-4



MA-5

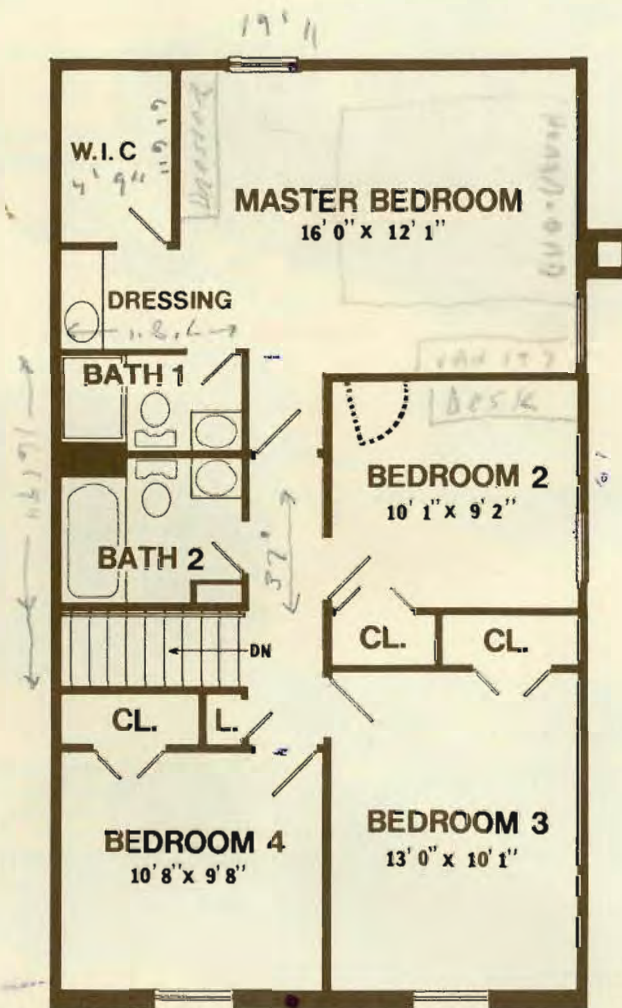


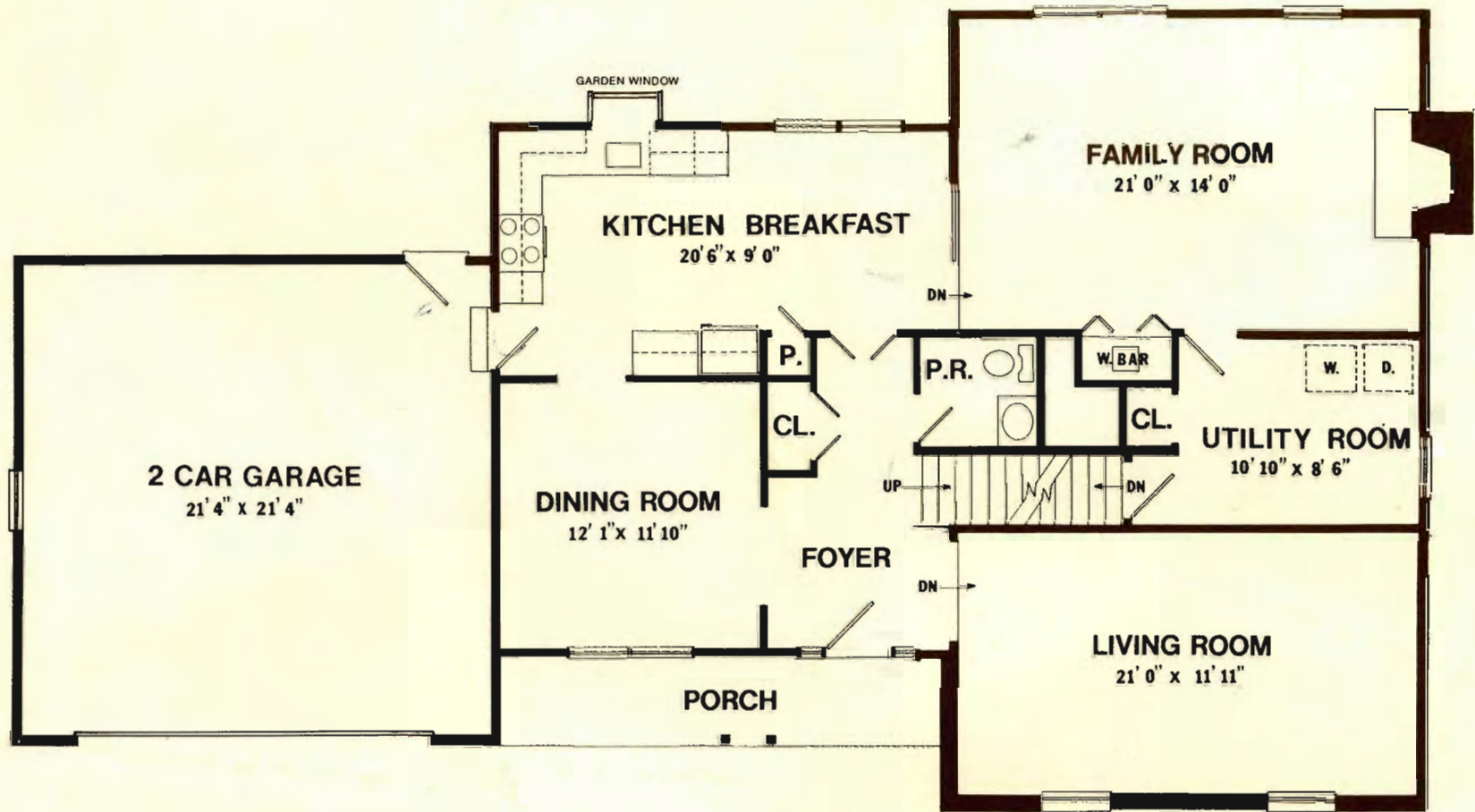
MA-6



As a result of our continuing research and development, plans and elevations are subject to change.

MADISON FLOOR PLAN





2 CAR GARAGE
21' 4" x 21' 4"

GARDEN WINDOW

KITCHEN BREAKFAST
20' 6" x 9' 0"

FAMILY ROOM
21' 0" x 14' 0"

DN

P.

P.R.

W.BAR

W.

D.

CL.

CL.

UTILITY ROOM
10' 10" x 8' 6"

UP

DN

DINING ROOM
12' 1" x 11' 10"

FOYER

DN

PORCH

LIVING ROOM
21' 0" x 11' 11"

All room dimensions approximate